



# Norfolk Cruise Departure Guide

## Everything You Need to Know Before You Sail

Norfolk, Virginia is one of the East Coast's most convenient cruise departure ports. Located in the heart of the historic Hampton Roads region, Norfolk combines an easy embarkation experience with rich naval history, waterfront attractions, and easy access from much of the Mid-Atlantic.

Whether you're driving in or flying to Virginia, this guide will help you start your cruise vacation with confidence.



## About the Norfolk Cruise Terminal



The **Half Moone Cruise & Celebration Center** is located along Norfolk's beautiful downtown waterfront.

Travelers appreciate:

- Easy interstate access
- Modern cruise terminal
- Walkable downtown location
- Beautiful harbor views
- Nearby hotels and restaurants
- Convenient parking

Unlike some larger ports, Norfolk offers a relaxed embarkation experience with shorter walking distances and less congestion.



## Cruise Lines Sailing from Norfolk

Norfolk has traditionally hosted seasonal sailings from **Carnival Cruise Line**, with additional cruise lines occasionally operating from the port as schedules evolve.

Popular itineraries have included:

- The Bahamas
- Bermuda
- Eastern Caribbean
- Canada & New England (select sailings)

Cruise schedules can vary by season, so always confirm your departure information before traveling.

---

## Getting to Norfolk

### Driving

Norfolk is conveniently located near several major highways:

- I-64
- I-264
- I-664
- US-13
- US-58

Approximate driving times:

- Richmond – 1½ hours
  - Washington, DC – 3½ hours
  - Raleigh – 3½ hours
  - Charlotte – 6 hours
  - Philadelphia – 5½ hours
- 

### Flying

Nearest airport:

#### **Norfolk International Airport (ORF)**

Located approximately **15 minutes** from the cruise terminal.

Major airlines serving Norfolk include:

- American Airlines
  - Delta Air Lines
  - Southwest Airlines
  - United Airlines
  - Breeze Airways
  - Allegiant Air
-



# Transportation Options

Visitors can reach the cruise terminal by:

- Taxi
- Uber
- Lyft
- Hotel shuttle (select hotels)
- Cruise line transfers (when offered)

Many downtown and airport hotels offer cruise packages that include parking and shuttle service.

---

## **P** Parking at the Cruise Terminal

The Half Moone Cruise Terminal offers convenient parking close to the ship.

Features include:

- Secure parking
- Accessible parking
- Easy luggage unloading
- Short walk to terminal

Parking fees may change, so check the Port of Norfolk website before your cruise.



## Hotels Near the Cruise Port

Popular choices include:

### **Downtown Norfolk**

- Hilton Norfolk The Main
- Norfolk Waterside Marriott
- Courtyard Norfolk Downtown

### **Near the Airport**

- Holiday Inn Express Norfolk Airport
- Hampton Inn Norfolk Airport
- Hilton Garden Inn Norfolk Airport

Many hotels offer:

- Cruise parking packages
- Airport shuttle
- Cruise terminal transportation

Always verify shuttle availability before booking.

---

## Restaurants Before Your Cruise

Downtown Norfolk offers a wide variety of dining options.

Popular choices include:

- Fresh seafood
- Steakhouses
- Waterfront dining
- Southern cuisine
- Local breweries
- Casual cafés

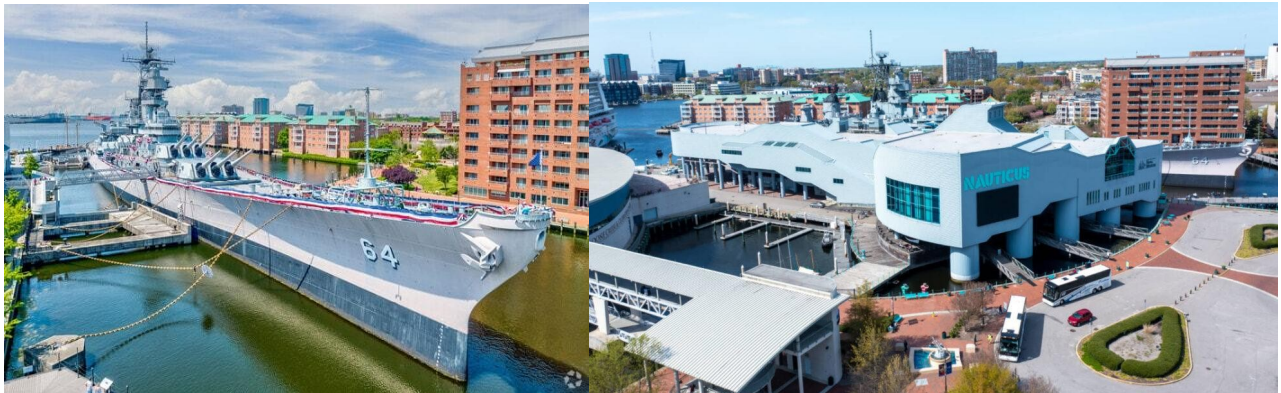
The Waterside District is especially popular for pre-cruise dining and entertainment.

---

## Things to Do Before Your Cruise

If you're arriving a day early, consider exploring some of Norfolk's top attractions.

### **Battleship Wisconsin**



One of the largest battleships ever built and part of the **Nauticus Maritime Museum**.

---

### **Waterside District**

A lively waterfront destination featuring restaurants, bars, shopping, and live entertainment.

---

### **Norfolk Botanical Garden**

One of the largest botanical gardens on the East Coast with beautiful walking trails and seasonal blooms.

---

## Virginia Beach

Only about 30 minutes away.

Enjoy:

- Oceanfront Boardwalk
  - Beaches
  - Restaurants
  - Shopping
  - Aquarium
- 

## Colonial Williamsburg

Approximately one hour away.

Step back in time and experience one of America's most famous living-history destinations.

---

## Busch Gardens Williamsburg

A favorite for families arriving a day or two before their cruise.

---



# Weather Throughout the Year

Norfolk experiences four distinct seasons.

### Winter (Dec–Feb)

- Highs: 45–55°F
- Cool evenings
- Light jacket recommended

### Spring (Mar–May)

- Highs: 60–78°F
- Comfortable temperatures
- Beautiful blooming gardens

### Summer (Jun–Aug)

- Highs: 82–90°F
- Warm and humid
- Afternoon thunderstorms possible

### Fall (Sep–Nov)

- Highs: 60–80°F

- Pleasant weather
  - Lower humidity
  - Beautiful fall colors
- 

## Hurricane Season

Atlantic hurricane season runs:

**June 1 – November 30**

Norfolk occasionally experiences tropical systems during late summer and early fall.

Cruise lines closely monitor weather conditions and may adjust itineraries when necessary.

Travel insurance is highly recommended.

---

## Embarkation Day Tips

Before leaving for the terminal, make sure you have:

- ✓ Passport or approved identification
- ✓ Boarding documents
- ✓ Cruise luggage tags
- ✓ Medications
- ✓ Travel insurance information
- ✓ Carry-on bag with valuables and essentials

Remember, checked luggage may not arrive at your cabin until later in the afternoon.

---

## Premium Travel Group Tip

Norfolk is one of the most enjoyable East Coast departure ports because it combines an easy embarkation process with plenty to see and do before your cruise. Arriving a day early gives you the opportunity to explore naval history, relax along the waterfront, or spend time at nearby Virginia Beach before beginning your vacation.

---



## Continue Planning Your Cruise

Continue preparing for your vacation with our helpful guides:

- [Vacation Packing Guide](#)
- [Caribbean Vacation Planning Guide](#)
- [When to Visit the Caribbean](#)
- [Cruise Port Guides](#)
- [Cruise Departure Guides](#)
- [Shore Excursion Planning Guide](#) (*Coming Soon*)