

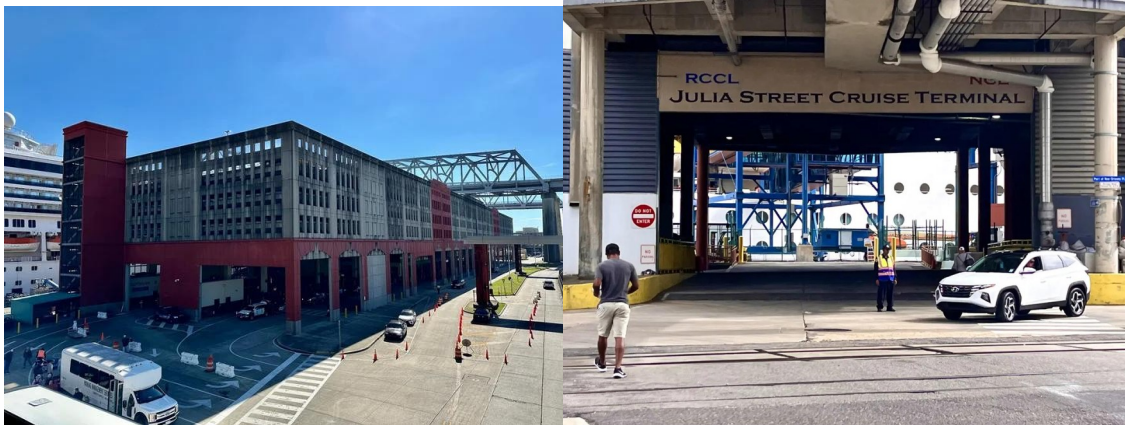
New Orleans Cruise Departure Guide

Everything You Need to Know Before You Sail

Few cruise departure ports offer the excitement, culture, and history of New Orleans. Known for its incredible food, live jazz, historic architecture, and Southern hospitality, New Orleans is more than just a place to board your ship—it's a destination all its own.

Whether you're cruising to the Western Caribbean or the Bahamas, arriving a day or two early allows you to experience everything this unforgettable city has to offer.

About the Port of New Orleans



The **Port of New Orleans (Port NOLA)** is located along the Mississippi River in the heart of downtown.

Cruise passengers enjoy:

- Easy interstate access
- Modern cruise terminals
- Close proximity to the French Quarter
- Numerous nearby hotels
- Excellent restaurants
- Easy access to attractions

The two primary cruise terminals are:

Erato Street Cruise Terminal

Home to many **Carnival Cruise Line** sailings.

Julia Street Cruise Terminal

Used by **Norwegian Cruise Line**, **Royal Caribbean**, and other cruise lines as schedules require.

Most hotels, restaurants, and attractions are within a short drive—or even walking distance—from the terminals.



Cruise Lines Sailing from New Orleans

New Orleans offers a variety of year-round and seasonal cruise options.

Popular cruise lines include:

- Carnival Cruise Line
- Norwegian Cruise Line
- Royal Caribbean

Common itineraries include:

- Western Caribbean
- Bahamas
- Mexico
- Panama Canal (select sailings)

Popular ports may include:

- Cozumel
 - Costa Maya
 - Roatán
 - Harvest Caye
 - Belize City
 - Grand Cayman
-



Getting to New Orleans

Driving

New Orleans is easily reached by:

- I-10
- I-55
- I-59

Approximate driving times:

- Baton Rouge – 1½ hours
- Houston – 5½ hours
- Mobile – 2½ hours
- Dallas – 8 hours
- Atlanta – 7 hours

Flying

Nearest airport:

Louis Armstrong New Orleans International Airport (MSY)

Located approximately:

15–20 miles from the cruise terminals.

Major airlines include:

- American
- Delta
- Southwest
- United
- Spirit
- JetBlue



Transportation

Options include:

- Uber
- Lyft
- Taxi
- Hotel shuttle (select hotels)
- Cruise line transfers

The airport is approximately **25–35 minutes** from downtown depending on traffic.

Cruise Parking

The Port of New Orleans offers convenient parking adjacent to the terminals.

Benefits include:

- Secure parking garage
- Covered parking (at some facilities)
- Accessible parking
- Short walk to the ship
- Luggage assistance

Always check current parking rates before your cruise.



Hotels Near the Cruise Port4

Popular cruise hotels include:

Walking Distance

- Hilton New Orleans Riverside
- Embassy Suites Convention Center
- Hyatt Place Convention Center
- Omni Riverfront Hotel

French Quarter

- Hotel Monteleone
- Bourbon Orleans Hotel
- Royal Sonesta

Many hotels offer:

- Cruise packages
- Parking specials
- Shuttle service



Must-Try New Orleans Food

One of the biggest reasons to arrive early is the food.

Don't miss:

- Gumbo
- Jambalaya
- Crawfish Étouffée
- Po' Boys
- Muffulettas
- Red Beans & Rice
- Beignets
- Bananas Foster

Popular restaurants include:

- Café du Monde
 - Mother's Restaurant
 - Acme Oyster House
 - Commander's Palace
 - Drago's Seafood
-



Things to Do Before Your Cruise



French Quarter

Walk historic streets filled with music, restaurants, galleries, and unique shops.

Jackson Square

One of New Orleans' most iconic landmarks.

Café du Monde

Enjoy famous beignets and café au lait.

Bourbon Street

Experience the city's famous nightlife and live music.

Garden District

Beautiful historic mansions, oak-lined streets, and charming neighborhoods.

National WWII Museum

Consistently ranked among the best museums in the United States.

Mississippi River Cruise

Take a sightseeing cruise aboard an authentic paddlewheeler.

Streetcars

Ride the historic St. Charles Avenue streetcar through some of the city's most beautiful neighborhoods.



Festivals & Special Events

New Orleans hosts festivals throughout the year.

Popular events include:

- Mardi Gras
- Jazz & Heritage Festival
- French Quarter Festival
- Essence Festival
- Halloween celebrations

If your cruise coincides with a major festival, expect larger crowds and higher hotel prices.



Weather Throughout the Year

Winter (Dec–Feb)

- Highs: 60–68°F
- Cool evenings
- Light jacket recommended

Spring (Mar–May)

- Highs: 70–85°F
- Pleasant weather
- Lower humidity

Summer (Jun–Aug)

- Highs: 88–94°F
- Hot and humid
- Frequent afternoon thunderstorms

Fall (Sep–Nov)

- Highs: 70–85°F
 - Comfortable temperatures
 - Lower humidity later in the season
-

Hurricane Season

Official season:

June 1 – November 30

Late summer and early fall can occasionally bring tropical storms or hurricanes to the Gulf Coast.

Cruise lines monitor conditions closely and may adjust itineraries if necessary.

Travel insurance is highly recommended.

Embarkation Day Tips

Before leaving your hotel, make sure you have:

- ✓ Passport or approved ID
- ✓ Boarding documents
- ✓ Cruise luggage tags
- ✓ Medications
- ✓ Carry-on essentials
- ✓ Travel insurance information

Allow extra travel time if major festivals or special events are taking place.

Premium Travel Group Tip

New Orleans is one of the few cruise ports where we strongly recommend arriving at least **one day early**. Not only does it reduce the stress of travel delays, but it also gives you the opportunity to experience one of America's most vibrant cities before your cruise begins.

Between the incredible food, live jazz, historic neighborhoods, and unforgettable Southern hospitality, New Orleans is truly a destination worth exploring.

Continue Planning Your Cruise

Continue preparing with our helpful guides:

- Vacation Packing Guide
- Caribbean Vacation Planning Guide
- Western Caribbean Vacation Guide
- When to Visit the Caribbean