



Port Everglades (Fort Lauderdale) Cruise Departure Guide

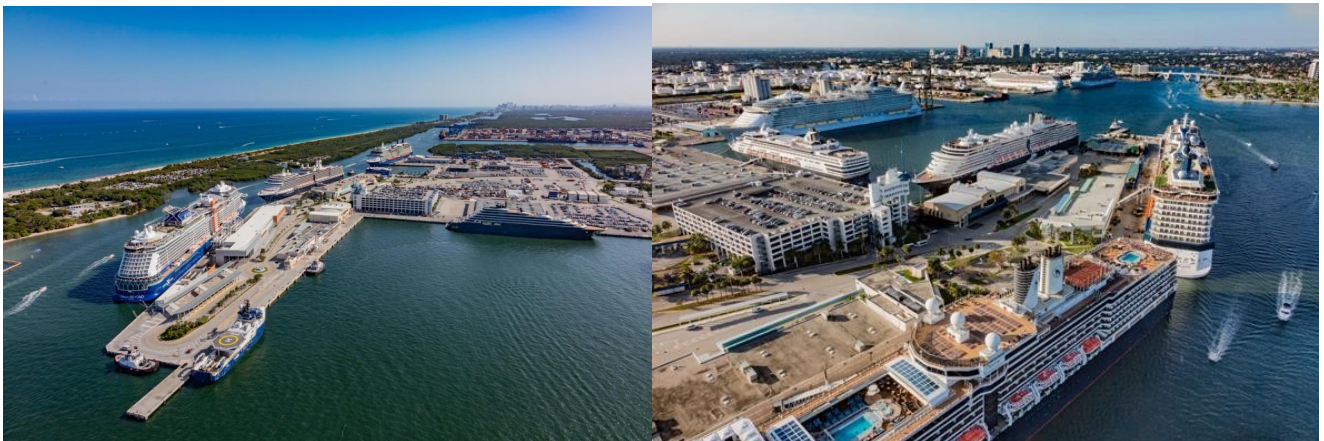
Everything You Need to Know Before You Sail

Port Everglades in Fort Lauderdale is one of the busiest and most popular cruise ports in the world. Located just minutes from Fort Lauderdale-Hollywood International Airport and surrounded by beautiful beaches, luxury resorts, shopping, and waterfront dining, it's an ideal place to begin your cruise vacation.

Whether you're sailing to the Caribbean, the Panama Canal, Europe, or beyond, arriving a day or two early gives you the opportunity to enjoy South Florida while ensuring a stress-free embarkation day.



About Port Everglades



Located in Fort Lauderdale, Florida, **Port Everglades** is one of the world's busiest cruise ports, serving millions of passengers annually.

Passengers enjoy:

- Modern cruise terminals
- Convenient airport access
- Numerous nearby hotels
- Beautiful waterfront views
- Easy highway access
- Excellent dining and shopping
- Efficient embarkation facilities

Port Everglades is also one of the world's busiest seaports for cargo and petroleum, making it an important international gateway.



Cruise Lines Sailing from Port Everglades

Port Everglades offers one of the largest selections of cruise lines anywhere in the world.

Cruise lines include:

- Princess Cruises
- Celebrity Cruises
- Holland America Line
- Royal Caribbean International
- Carnival Cruise Line
- Disney Cruise Line (select sailings)
- Virgin Voyages (select sailings)
- Silversea Cruises
- Oceania Cruises
- Regent Seven Seas Cruises
- Cunard
- Emerald Cruises (select sailings)

Popular itineraries include:

- Bahamas
- Eastern Caribbean
- Western Caribbean
- Southern Caribbean
- Panama Canal
- Transatlantic crossings
- Mediterranean repositioning cruises
- South America (select sailings)

Common ports include:

- Nassau
- Perfect Day at CocoCay
- Grand Turk
- Amber Cove
- San Juan
- St. Thomas
- Tortola
- Aruba
- Curaçao
- Cozumel
- Costa Maya
- Grand Cayman
- Roatán



Getting to Port Everglades

Driving

Port Everglades is easily reached via:

- I-95
- I-595
- Florida Turnpike
- US-1

Approximate driving times:

- Miami – 45 minutes
- West Palm Beach – 1 hour
- Orlando – 3½ hours
- Tampa – 4½ hours

Flying

Fort Lauderdale-Hollywood International Airport (FLL)

One of the biggest advantages of Port Everglades is its proximity to the airport.

Travel time:

Approximately 10 minutes

Many travelers can go from baggage claim to the cruise terminal in less than 30 minutes.

Miami International Airport (MIA)

Approximately:

35–45 minutes

Often offers additional flight options and international service.



Transportation

Transportation options include:

- Uber
- Lyft
- Taxi

- Cruise line transfers
- Hotel shuttle services
- Private transportation

Because the airport is so close, transportation costs are generally lower than at many other cruise ports.

Parking

Port Everglades offers convenient parking adjacent to most terminals.

Parking features:

- Covered garages
- Surface lots
- Accessible parking
- Security
- Short walk to terminals

Reserve parking early during busy holiday and winter sailings.



Hotels Near the Cruise Port

Popular cruise hotels include:

Near Port Everglades

- Embassy Suites by Hilton Fort Lauderdale 17th Street
- Hilton Fort Lauderdale Marina
- Renaissance Fort Lauderdale Harbor Hotel
- Hyatt Place Fort Lauderdale Cruise Port

Fort Lauderdale Beach

- B Ocean Resort
- Bahia Mar Fort Lauderdale Beach
- Marriott Harbor Beach Resort
- Lago Mar Beach Resort

Many hotels offer:

- Park-and-cruise packages
 - Airport shuttle
 - Cruise terminal shuttle
-

Where to Eat Before Your Cruise

Fort Lauderdale offers outstanding dining options.

Popular choices include:

- 15th Street Fisheries
- Coconuts
- Boatyard
- Kelly's Landing
- Southport Raw Bar
- Louie Bossi's

Don't miss:

- Fresh Florida seafood
- Stone crab (seasonal)
- Key Lime Pie
- Cuban cuisine
- Waterfront dining

Things to Do Before Your Cruise



Fort Lauderdale Beach

Relax on miles of beautiful sandy beaches before your cruise.

Las Olas Boulevard

A favorite destination for:

- Shopping
- Restaurants
- Art galleries
- Cafés

Water Taxi

One of the best ways to explore Fort Lauderdale's famous canals and luxury waterfront homes.

Bonnet House Museum & Gardens

A beautiful historic estate featuring art collections and tropical gardens.

Hugh Taylor Birch State Park

Perfect for walking, kayaking, biking, and enjoying nature.

Everglades Airboat Tours

Take a short trip west of the city to experience one of Florida's most unique ecosystems.

Watch for:

- Alligators
 - Birds
 - Native wildlife
-



Weather Throughout the Year

Winter (Dec–Feb)

- Highs: 75–80°F
- Sunny and comfortable
- Low humidity

Spring (Mar–May)

- Highs: 78–86°F
- Excellent beach weather

Summer (Jun–Aug)

- Highs: 88–92°F
- Hot and humid
- Afternoon thunderstorms

Fall (Sep–Nov)

- Highs: 80–88°F
- Warm temperatures

- Lower humidity later in the season
-

Hurricane Season

Official season:

June 1 – November 30

Peak activity:

- August
- September
- October

Cruise lines carefully monitor tropical weather and may adjust itineraries when necessary.

Travel insurance is strongly recommended.

Embarkation Day Tips

Before leaving your hotel, make sure you have:

- ✓ Passport or approved identification
- ✓ Boarding documents
- ✓ Cruise luggage tags
- ✓ Medications
- ✓ Carry-on essentials
- ✓ Travel insurance information

Traffic around the port can be busy on weekends, so allow extra travel time.

Premium Travel Group Tip

One of the biggest advantages of sailing from Port Everglades is its convenience. With the airport just minutes away, beautiful beaches nearby, and countless hotels and restaurants within a short drive, it's one of the easiest cruise ports for travelers. We recommend arriving at least one day early to enjoy Fort Lauderdale's waterfront, relax on the beach, or explore Las Olas Boulevard before beginning your cruise.



Continue Planning Your Cruise

Continue preparing with our helpful guides:

- [Vacation Packing Guide](#)
- [Caribbean Vacation Planning Guide](#)
- [Western Caribbean Vacation Guide](#)
- [Eastern Caribbean Vacation Guide](#)
- [Southern Caribbean Vacation Guide](#)
- [When to Visit the Caribbean](#)
- [Cruise Port Guides](#)
- [Cruise Departure Guides](#)



Why Sail from Port Everglades?

Port Everglades combines convenience, world-class cruise options, and a relaxing South Florida atmosphere. Its close proximity to the airport, outstanding selection of cruise lines, and beautiful beaches make it one of the best homeports in the world. Whether you're sailing for a long-awaited Caribbean getaway or an unforgettable voyage across the Atlantic, Fort Lauderdale is the perfect place to begin your adventure.